

Geodis Wilson Algeria Integrated Logistics Solutions

expect more.



GEODIS
wilson



GEODIS
wilson

GEODIS GROUP SNCF DIVISION



Geodis Group - Facts and Figures



FREIGHT FORWARDING



REVENUE
€ 2,400m
(US\$ 3,329m)

EMPLOYEES
7,000

COUNTRIES
52



CONTRACT LOGISTICS



REVENUE
€ 1,085m
(US\$ 1,510m)

EMPLOYEES
6,000

COUNTRIES
15



GROUPAGE/ LTL EXPRESS



REVENUE
€ 1,841m
(US\$ 2,560m)

EMPLOYEES
12,000

COUNTRIES
25



FULL TRUCK LOAD



REVENUE
€ 882m
(US\$ 1,227m)

EMPLOYEES
4,300

COUNTRIES
5



SUPPLY CHAIN OPTIMIZATION

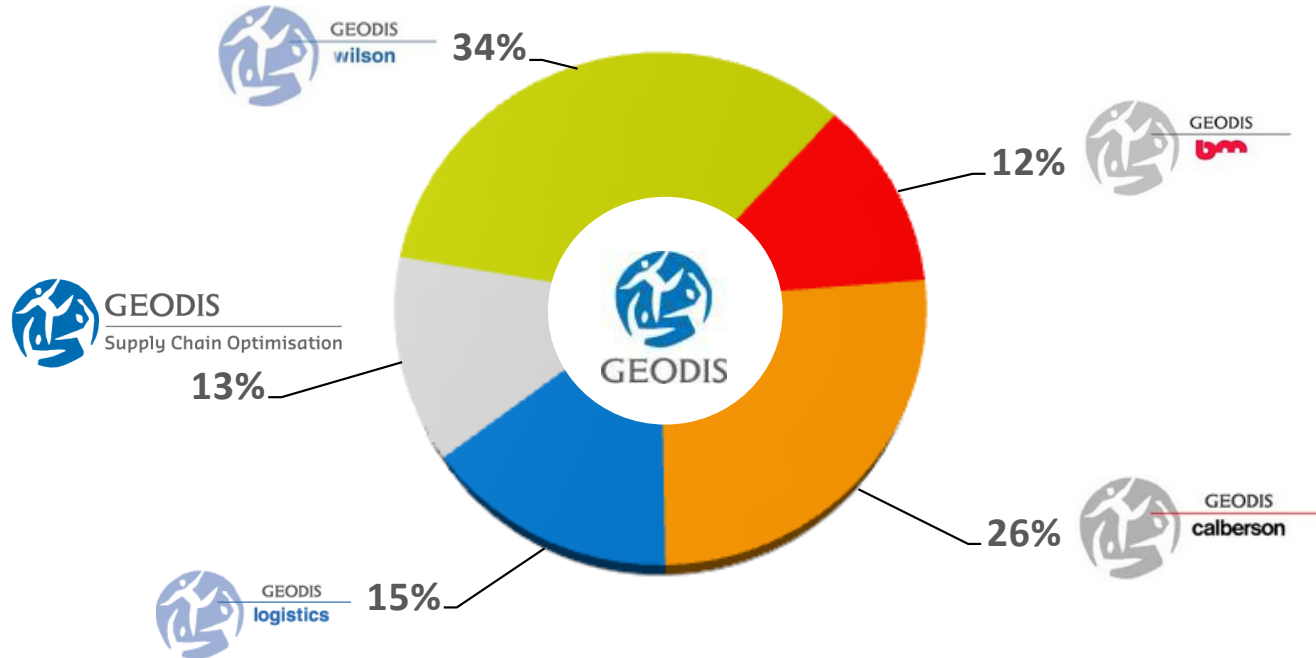


REVENUE
€ 916m
(US\$ 1,274m)

EMPLOYEES
1,300

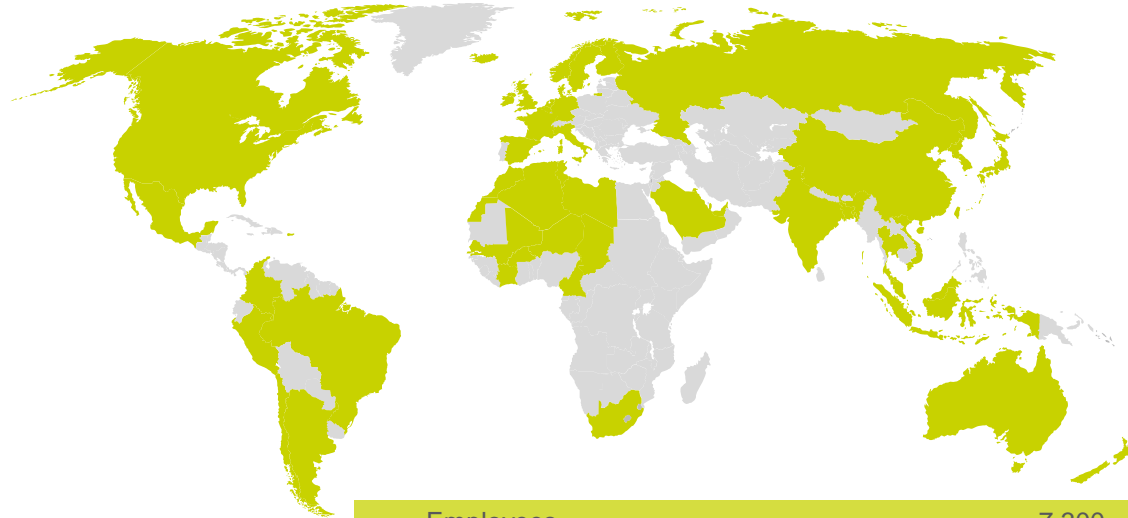
COUNTRIES
59

Geodis Group - Revenue Break Down



We Have the Worldwide Network

The backbone of our company



■ Geodis Wilson

Employees	7,300
Geodis Wilson offices worldwide	+250
Countries with Geodis Wilson presence	+50
Countries covered by network	+120
Air Freight (tonnes)	206,058
Sea Freight (TEU)	425,000
Revenue	2.4 Billion €

Figures based on year 2011

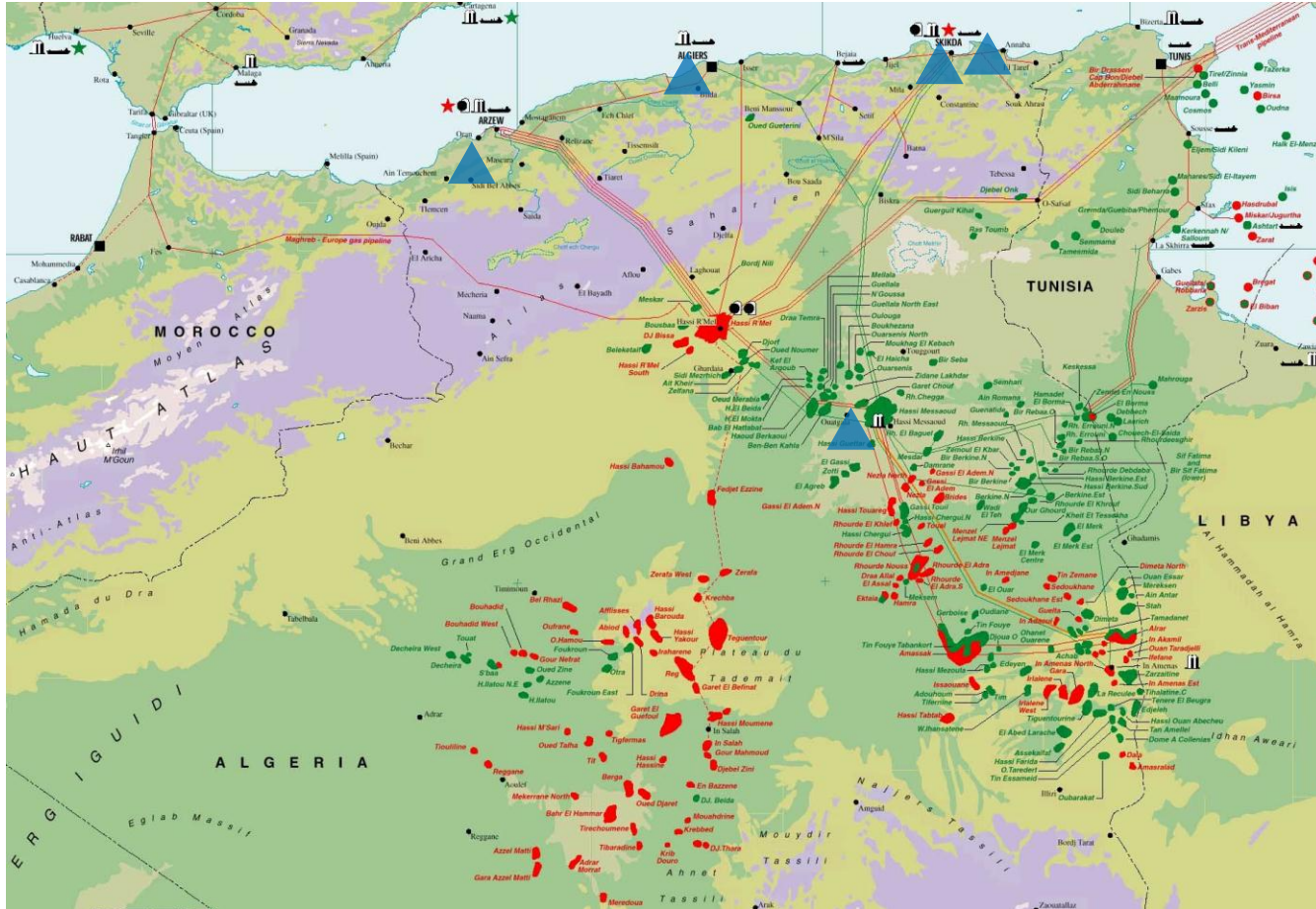


GEODIS
wilson

GEODIS WILSON ALGERIA

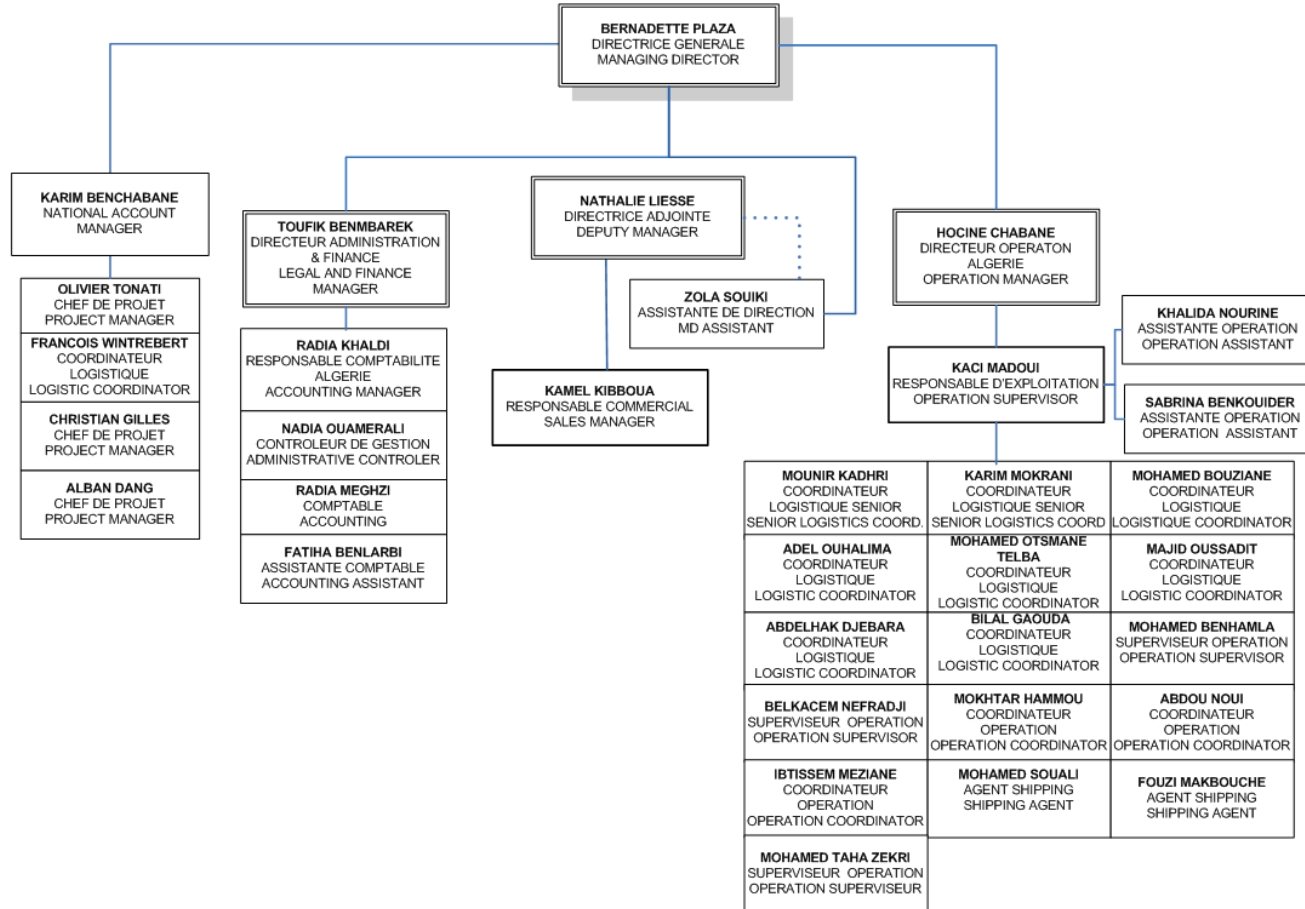


INTRODUCTION TO ALGERIA



GW ALGERIA LOCATION

Org Chart



Industrial Project : Power ALSTOM



- **RELIZANE** June 2008 / June 2010 (75 000 FRT)
- **TERGA** Alstom Project 2009 from Rotterdam to Arzew Algeria
- 3 x 400 MW - KA26. Combined Cycle Power Plant
- Up to Date volume 19 500 FRT 56 000 CBM (Total Project 150 000 CBM)
- ORAN / MOSTAGANEM / ARZEW
- 1 Dedicated 5 People Team since 2008
- 1 Expatriate on Site
- 2 Customs Broker

Industrial Project : Power G.E



▪ GENERAL ELECTRIC

- **Bir El Djir Central** 2 X 40 MW - 2007 / 2009 35 000 FRT
 - On going contract for the Maintenance with GEODIS Algeria
- Port Alger 2008 / Juin 2011 2 X 40 MW - (Up to date commissioning phase) 70 000 FRT
- 1 dedicated team ORAN / ARZEW / MOSTA for BIR EL DJIR
- 1 dedicated team ALGER PORT Centre

INDUSTRIAL PROJECT: POWER ABB

ABB POWER / SONELGAZ

- Projects AFFLOU – BERROUAGHIA

Transformers 60 to 150 T Each - Quantity 4 / 4,85 m/ H

Total FRT 35 000 1 year Contract

- Projects SIDI EL KEBIR & DERGUINA

Transformers 60 to 100 T Each – 6 / 4,85 m/H

Total FRT 25 000



INDUSTRIAL PROJECT: POWER IBERDROLA



CCPP Koudiet 1.200 MW - Contract Signed in April 2011

In association with General Electric, IBERDROLA Ingeniería y Construcción was awarded at the end of 2007 a 1.47 billion-euro turnkey construction contract for a 1,200 MW combined cycle plant. The new plant will be located in the town of Koudiet Edraouch (in the province of El Tarf), on the Algerian Mediterranean coast.

GEODIS ALGERIA carry the in country material from Port to site including Customs Clearance.

1 Dedicated Team based in ANNABA / SKIKDA and ALGIERS

Industrial Project : CONSTRUCTION

▪ RAZEL - BARAGE TABELLOUT

- 4 Years Contract
- DJENDJEN
- 2 Expatriates dedicated for both Projects
- 1 Team of Coordinators
- • SKIKDA/DJENDJEN/CONSTANTINE

▪ SCHNEIDER - ENERGY MANAGEMENT

- 600 Full containers Load from WW to Algeria
- IP Project and Local distribution
- 1 Team of 6 staff dedicated
- ALGIERS / SKIKDA / MOSTAGANEM



INDUSTRIAL PROJECT: CONSTRUCTION

ALSTOM TRANSPORT

- Constantine Tramway - EMA Door to Door Contract
- 2 years
- 1 team of coordinators based in SKIKDA
- Full management from EU to Site



OIL & GAS HASSI MESSAOUD

- **GROUPEMENT BERKINE Since June 2007 OIL & GAS**
- **GEODIS Oil & Gas Marseille Main Hub with 2 sub Hub's IAH/LON**
 - Full Re supply process W/W to HASSI MESSAOUD
 - 1 Dedicated Yard in HME with one partner since 2007
 - Major port of entry SKIKDA and MOSTAGANEM
 - Consolidation dedicated to G.B Full container and B/B to HBNS and EL MERK
 - DOOR TO DOOR CONTRACT
- 2 NEW CONTRACTS
 - **OHANET / BHP**- 2 years Contracts
 - **BP - ISG + IAN** - 3 years Contracts



OIL & GAS HASSI MESSAOUD

- **OHANET / BHP- 2 years Contracts 2011/2012**
 - Door to Door Contract
 - Resupply Management - Full Container load consolidation dedicated.
 - **SONATRACH, BHP Billiton** and its joint venture

BHP Billiton holds a 45% equity interest in **Ohanet**, with joint venture partners Japan **Ohanet Oil & Gas Co., Ltd.**, 30%, Woodside Energy (Algeria) Pty. Ltd., 15%, and Petrofac Resources (**Ohanet**) LLC, 10%.



OIL & GAS HASSI MESSAOUD

- **BP - ISG + IAN** - 3 years Contracts - 2011 / 2013
 - Contract Door to POD Algeria (Annaba-Mostaganem) FCL consolidation Dedicated
 - GEODIS Hub's control Marseille
 - Sub Hub's
 - In Salah Gas (ISG) and In Amenas are a joint venture between BP, Statoil and the Algerian state-owned oil company Sonatrach. It's one of the world's leading carbon capture and storage initiatives.



OIL & GAS HASSI MESSAOUD

- JV Orascom - Bentini – 28 Months Contracts – 2009 / 2011
Extension to end 2012.

Egyptian Orascom Construction Industries (OCI) has been awarded a US \$ 230 million contract for construction work on the El Merk Central Processing Facility (CPF) in Algeria.

OCI, in a 50/50 joint venture with Bentini Italy, signed a US \$ 230 million contract for the CPF's 'Base de Vie' and Industrial Base facility. The package, a design-and-build basis, includes all necessary infrastructure and buildings for the CPF.

- Door to Door contract
- 1 dedicated team based in Algiers and Skikda



OIL & GAS ADRAR

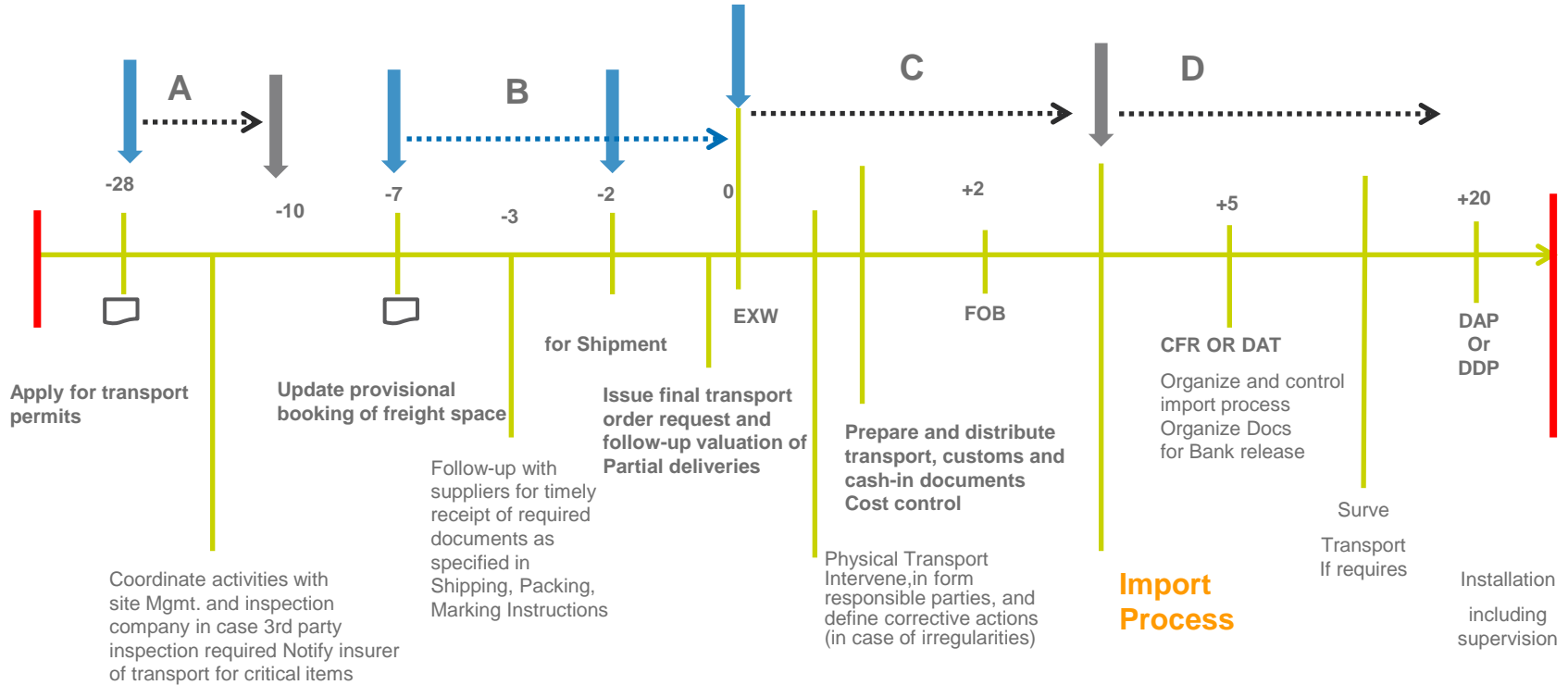
- **CGG VERITAS** - 1 years Contracts - 2012 / 2013
 - Local Contract
 - 25 000 FRT
 - Location : OUGROUT – Adrar -
 - Major Port of entry Oran & Mostaganem
 - 1 Dedicated team 5 people



GEODIS WILSON ALGERIA PROCESS



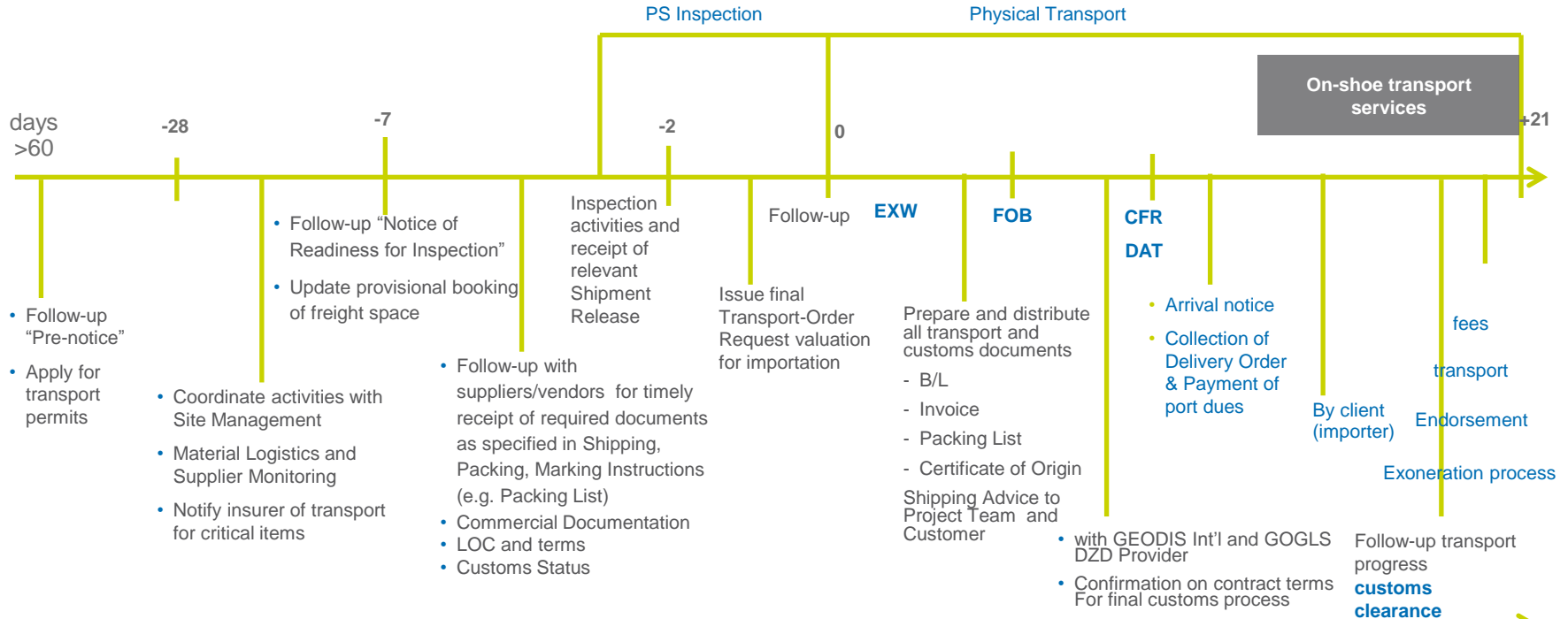
Logistics flow Control IP projects



➡ Responsibility with supplier

➡ Import process - interface with Importer (SONELGAZ or SONATRACH)

GEODIS ALGERIA Project Management



- 9 TRANSPORT MONITORING TRACK AND TRACE" AND SHIPMENT STATUS REPORT
- 9TRANSPORT COST CONTROL and KPI'S CONTROL AT DESTINATION
- WEEKLY REPORT AND DAILY REPORT FROM DESTINATION GEODIS COORDINATOR AND PROJECT MANAGER
- WORK ON FIELD WITH CUSTOMER TEAM ON CONTRACT REVIEW AND LOCAL PROCESS



Control Key of Performance

■ Anticipation from origin

- Documentation
 - Commercial invoice Original
 - P/L Original
 - C.O/Quality Control
 - Value
 - ANDI Yes - No
 - DDU or DDP
 - EXONERATION PROCESS Yes -No
 - TYPE OF EXONERATION according the contract

■ HUB's Control

- Operation
 - Expediting
 - PO Management
 - EXW Transportation to HUB's
 - Shuttle ex UK from LHR HUB to MAR HUB
 - QA/QC
 - Packing/Marking
 - Dangerous Goods Maintenance on process for Algeria
 - Storage (Covered/non Covered) Marseille/London/Houston/Antwerp
 - Export Customs from EU Ex Marseille
 - Issuance of Customer Commercial Invoice
 - Insurance
 - Container Stuffing
 - Ocean Shipping to port of Destination
 - Air Shipping Charter ex Marseille / Vetry Airport to Hassi Messouad
 - Safety and HSE control
 - OSD Rules and report
 - IT Management System (GONLINE / EDI - http connection on request)
 - KPI'S reporting

Control Key of Performance

■ Control at Destination

- Full Coordination
- Review on Documentation
- Pre Entry on request
- Permanent control on process with Customs Agents
- SOP AIR/SEA for Import/Export in/out Algeria
- SOP For Customs Clearance
 - Permanent/ ATA Carnet/Samples/ TIB
- SOP Road Transportation
- Registered as Licensed transportation company
- Transportation to site / Escort / Handling
- Supervision of Unloading on port, Unloading survey on request
- Road Survey for delivery on request
- Payment on behalf of Customer (excluding Arrival fees, Port
- Taxes/Duties/Surrestaries/Storage charges on port or at bonded facilities/CustomsPenalties)
- Maintenance on HSE and Safety based on Algerian Rules and Regulation
- Reporting Daily Report / KPI'S

DOCUMENTATION PROCESS = CONTROL

- **Flow of documentation and transmission**
 - 1 Central point for coordination on documentation
 - Control at destination with CUSTOMER TEAM & GOGLS -GEODIS TEAM
 - Terms and Conditions of Customer Contract application :
 - Process EUR 1 Yes / No
 - A.T (Temporary) Yes / No
 - Permanent Entry : Exo F 21 / F 22 Yes/No
 - DUTIES PAYMENT EXO FULL
 - TAXE EXO FULL
 - DUTIES PAYMENT CONSIGNMENT (980 process) Yes/No
 - DCP control to be confirmed as per Material specification
 - LOC / Domiciliation process (CO/Quality Certificate Yes/No)
 - Importer of Record to be confirmed with
 - Status of company registered in Algeria
 - Copies of Contract legalized
 - Chamber of Commerce registration
 - Fiscal card
 - Importer Magnetic card (customs statistics number/Allowance as Importer of record)
 - POA for Geodis Customs Agent
 - Dangerous Goods : Import License - MSDS - Letter of engagement
 - 21 DAYS FOR CUSTOMS CLEARANCE IN ALGERIA

DOCUMENTATION PROCESS = CONTROL

- **CUSTOMS CLEARANCE**
- **Based on contract terms**
- **D10 = D1000/D1025/D1008/D18**
- **Permanent / Exoneration/ Temporary Entry**
 - Customs clearance start up upon full documentation over hand to Geodis by the importer of Record
 - Including :
 - Fiscal card
 - Chamber of commerce registration
 - MBL original + Commercial invoice with Bank endorsement
 - Any documentation requested into the LOC
 - Certificate of Orgine
 - Certificate of Quality as per Fraud regulation if control applicable
 - Import license for material under Import control quota (e.i Dangerous goods/Telecom/
 - Camera/ IT equipment etc...)

DOCUMENTATION PROCESS = CONTROL

- OVER 21 DAYS Material transferred to Bonded facilities without pre notice
- CUSTOMS PENALTIES
- DEMAND FOR CUSTOMS RELEASED SUBJECT TO LOCAL CUSTOMS BUREAU APPROVAL
- OVER 2 Month Material seized by customs without pre notice
- CUSTOMS PENALTIES
- DEMAND FOR CUSTOMS RELEASED SUBJECT TO LOCAL CUSTOMS BUREAU APPROVAL
- DEMAND FOR CUSTOMS RELEASED SUBJECT TO LOCAL / REGIONAL / CENTRAL (Algiers) BUREAU APPROVAL
- CUSTOMS CLEARANCE RELEASED
- D10 Base on customs status of importation
- PHYSICAL MATERIAL INSPECTION ON DEMAND AND APPOINTMENT
- « Quittance » Customs receipt
- PAYMENT by Importer of Record Penalties and Duties
- LOADING ON TRUCK
- DELIVERY

expect more.



GEODIS
wilson